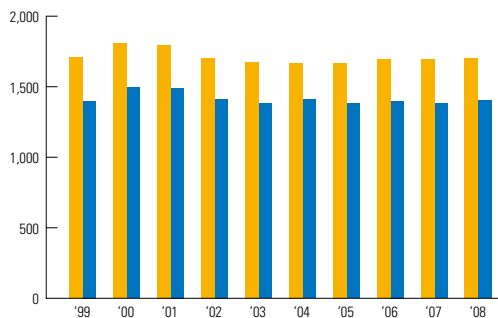
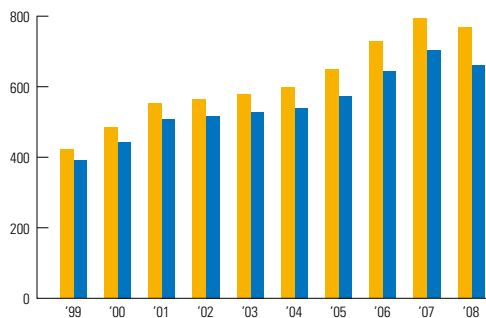


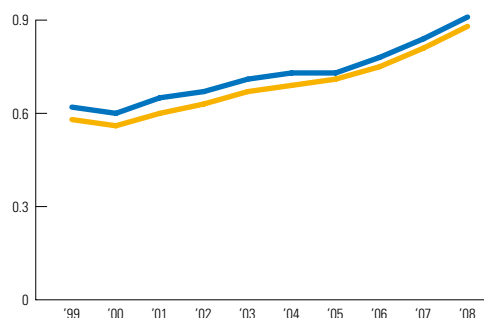
**Total Assets (¥ billion) 総資産 (十億円)**



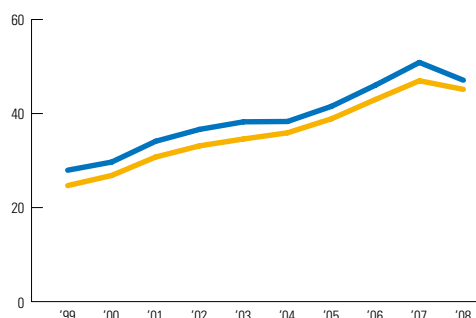
**Equity (¥ billion) 自己資本 (十億円)**



**Total Assets Turnover (times) 総資産回転率 (回)**



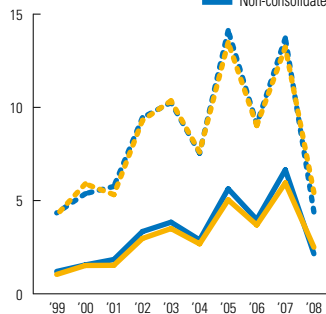
**Equity Ratio (%) 自己資本比率 (%)**



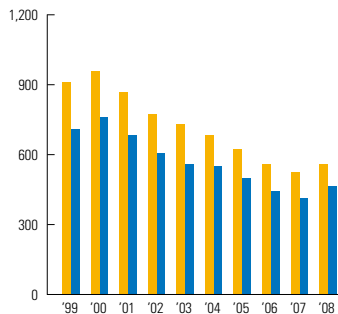
As of March 31	3月31日時点	1999	2000
<b>CONSOLIDATED 連結</b>			
Total Assets (¥ million)	総資産 (百万円)	1,707,446	1,805,086
ROA (Return on Assets) (%)	ROA (総資産利益率) (%)	1.04	1.52
Equity (¥ million)	自己資本 (百万円)	421,443	484,239
ROE (Return on Equity) (%)	ROE (自己資本利益率) (%)	4.23	5.90
Interest-bearing Debt (¥ million)	有利子負債残高 (百万円)	911,901	957,085
Net Interest-bearing Debt (¥ million)	ネット有利子負債残高 (百万円)	894,974	899,159
Fund-raising Expenses (¥ million)	金融費用 (百万円)	22,393	23,366
Total Assets Turnover (times)	総資産回転率 (回)	0.58	0.56
Equity Ratio (%)	自己資本比率 (%)	24.68	26.83
Current Ratio (%)	流動比率 (%)	82.53	99.80
D/E (Debt-equity) Ratio (times)	D/E レシオ (倍)	2.16	1.98
Interest Coverage Ratio (times)	インタレスト・カバレッジ・レシオ (倍)	3.29	3.02
Interest Payment Ratio (%)	負債利率 (%)	2.46	2.50
<b>NON-CONSOLIDATED 単体</b>			
Total Assets (¥ million)	総資産 (百万円)	1,399,820	1,493,699
ROA (Return on Assets) (%)	ROA (総資産利益率) (%)	1.20	1.55
Equity (¥ million)	自己資本 (百万円)	391,295	443,363
ROE (Return on Equity) (%)	ROE (自己資本利益率) (%)	4.34	5.37
Interest-bearing Debt (¥ million)	有利子負債残高 (百万円)	708,245	761,946
Net Interest-bearing Debt (¥ million)	ネット有利子負債残高 (百万円)	700,432	714,956
Fund-raising Expenses (¥ million)	金融費用 (百万円)	18,613	18,552
Total Assets Turnover (times)	総資産回転率 (回)	0.62	0.60
Equity Ratio (%)	自己資本比率 (%)	27.95	29.68
Current Ratio (%)	流動比率 (%)	99.88	115.19
D/E (Debt-equity) Ratio (times)	D/E レシオ (倍)	1.81	1.72
Interest Coverage Ratio (times)	インタレスト・カバレッジ・レシオ (倍)	3.18	2.87
Interest Payment Ratio (%)	負債利率 (%)	2.60	2.49

- Net Interest-bearing Debt = Interest-bearing Debt - Cash and Bank Deposits ネット有利子負債残高 = 有利子負債 - 現金及び預金
- Fund-raising Expenses = Interest Expenses + Bond Interest Expenses + Bond Issue Cost Amortization 金融費用 = 支払利息 + 社債利息 + 社債発行費償却
- Total Assets Turnover = Net Sales / Total Assets (average) 総資産回転率 = 売上高 / 総資産 (期中平均)
- Equity Ratio = Equity (year-end) / Total Assets (year-end) x 100 自己資本比率 = 自己資本 (期末) / 総資産 (期末) x 100

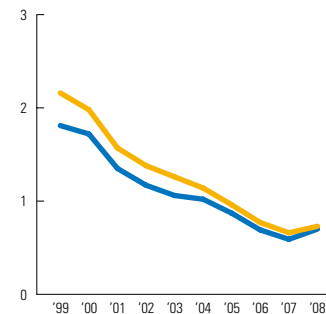
ROE & ROA (%) ROE Consolidated 連結 Non-consolidated 単体  
ROA Consolidated 連結 Non-consolidated 単体



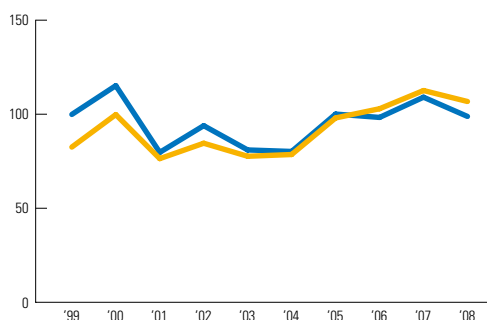
Interest-bearing Debt (¥ billion) 有利子負債残高 (十億円)



D/E (Debt-equity) Ratio (times) D/E レシオ (倍)

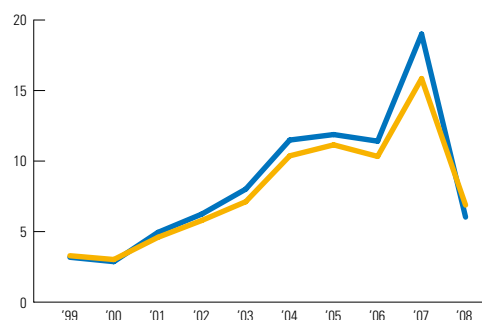


Current Ratio (%) 流動比率 (%)



Interest Coverage Ratio (times)

インタレスト・カバレッジ・レシオ (倍)



	2001	2002	2003	2004	2005	2006	2007	2008
1,797,669	1,702,712	1,676,064	1,666,828	1,668,734	1,693,898	1,692,635	<b>1,703,651</b>	
1.53	2.97	3.50	2.68	5.04	3.69	5.95	<b>2.50</b>	
552,790	564,077	579,706	598,453	648,766	728,231	795,101	<b>769,072</b>	
5.32	9.30	10.35	7.60	13.48	9.02	13.22	<b>5.43</b>	
870,347	775,894	731,301	682,744	624,105	559,911	525,467	<b>558,716</b>	
848,838	752,854	695,629	634,139	570,859	510,890	482,851	<b>512,624</b>	
22,866	19,274	17,472	14,822	13,134	11,014	10,369	<b>10,460</b>	
0.60	0.63	0.67	0.69	0.71	0.75	0.81	<b>0.88</b>	
30.75	33.13	34.59	35.90	38.88	42.99	46.97	<b>45.14</b>	
76.38	84.57	77.64	78.57	98.02	102.91	112.60	<b>106.76</b>	
1.57	1.38	1.26	1.14	0.96	0.77	0.66	<b>0.73</b>	
4.59	5.79	7.12	10.37	11.15	10.33	15.85	<b>6.88</b>	
2.50	2.34	2.32	2.10	2.01	1.86	1.91	<b>1.93</b>	
1,490,157	1,411,444	1,381,359	1,410,023	1,382,265	1,396,728	1,382,259	<b>1,401,464</b>	
1.84	3.34	3.84	2.89	5.63	3.98	6.65	<b>2.15</b>	
508,185	517,070	528,264	540,217	574,059	642,953	703,173	<b>660,000</b>	
5.76	9.45	10.26	7.54	14.12	9.09	13.72	<b>4.39</b>	
685,525	605,616	560,047	553,238	501,407	444,208	414,275	<b>465,276</b>	
679,406	598,577	545,146	517,119	461,579	379,490	391,134	<b>453,446</b>	
17,813	15,130	12,784	11,288	10,349	8,230	7,403	<b>7,858</b>	
0.65	0.67	0.71	0.73	0.73	0.78	0.84	<b>0.91</b>	
34.10	36.63	38.24	38.31	41.53	46.03	50.87	<b>47.09</b>	
79.72	93.91	81.00	80.20	100.07	98.29	109.05	<b>98.82</b>	
1.35	1.17	1.06	1.02	0.87	0.69	0.59	<b>0.70</b>	
4.94	6.24	8.01	11.49	11.88	11.41	19.00	<b>5.92</b>	
2.45	2.34	2.18	1.98	1.92	1.74	1.72	<b>1.75</b>	

● Current Ratio = Current Assets (year-end) / Current Liabilities (year-end) x 100 流動比率 = 流動資産 (期末) : 流動負債 (期末) x 100

● Debt-equity Ratio = Interest-bearing Debt (year-end) / Shareholders' Equity (year-end) デット・エクイティ・レシオ = 有利子負債 (期末) : 自己資本 (期末)

● Interest Coverage Ratio = (Operating Income + Interest Income + Dividend Income) / Fund-raising Expenses インタレスト・カバレッジ・レシオ = (営業利益 + 受取利息 + 受取配当金) : 金融費用

● Interest Payment Ratio = (Interest Expenses + Bond Interest Expenses) / Interest-bearing Debt (average) x 100 負債利率 = (支払利息 + 社債利息) : 有利子負債 (期中平均) x 100