

INVESTOR INFORMATION

As of March 31, 2010

TOKYO GAS CO., LTD.

Head Office

1-5-20 Kaigan, Minato-ku, Tokyo 105-8527, Japan
URL: http://www.tokyo-gas.co.jp/index_e.html

Overseas Offices

New York Representative Office
The Chrysler Building, 405 Lexington Avenue, 33rd Floor
New York, NY 10174, U.S.A.
Tel: +1-646-865-0577 Fax: +1-646-865-0592

Paris Representative Office
102, Avenue des Champs-Élysées, 75008 Paris, France
Tel: +33-1-45-62-00-59 Fax: +33-1-42-25-96-85

Asia Pacific Regional Office
Level 30, Menara Standard Chartered,
No. 30 Jalan Sultan Ismail, 50250 Kuala Lumpur, Malaysia
Tel: +60-3-2144-2928 Fax: +60-3-2144-2930

Date of Establishment October 1, 1885

Paid-in Capital ¥141,844,398,888

Aggregate Number of Shares Issuable
6,500,000,000 shares

Issued Number of Shares 2,703,761,295 shares

Number of Shareholders 156,144

Stock Listings Tokyo Stock Exchange,
Osaka Securities Exchange, and
Nagoya Stock Exchange (Trade code: 9531)

Independent Auditors KPMG AZSA & Co.

Agent to Manage Shareholders' Registry

The Chuo Mitsui Trust & Banking Co., Ltd.,
3-33-1 Shiba, Minato-ku, Tokyo 105-8574, Japan

Number of Employees 15,539
(Consolidated basis, excluding workers on loan
and part-time workers)

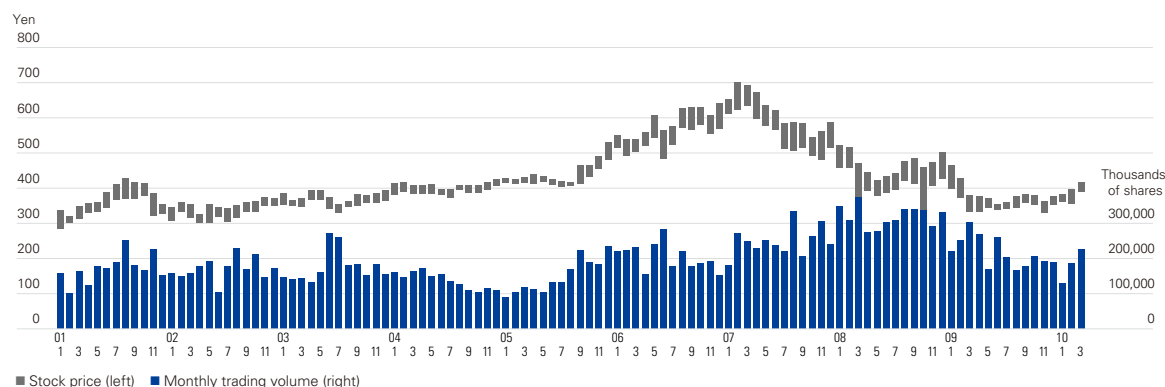
Principal Shareholders

Name	Number of shares held (Thousands)	Percentage of share ownership (%)
Nippon Life Insurance Company	163,000	6.04
Japan Trustee Services Bank, Ltd. (Trust a/c)	149,602	5.54
The Dai-ichi Mutual Life Insurance Company	120,472	4.46
The Master Trust Bank of Japan, Ltd. (Trust a/c)	109,411	4.05
Fukoku Mutual Life Insurance Company	68,504	2.54
Tokyo Gas Employees Shareholding Association	41,619	1.54
Japan Trustee Services Bank, Ltd. (Trust a/c 9)	37,370	1.38
Mizuho Trust & Banking Co., Ltd. Employee Pension Trust Dai-ichi Mutual Life Insurance Company Account Standby Trustee		
Trust & Custody Services Bank, Ltd.	35,490	1.32
Mellon Bank, N.A. as Agent for its Client Mellon Omnibus US Pension	33,007	1.22
State Street Bank and Trust Company (505225)	31,641	1.17

Notes: Percentage of share ownership is calculated by the number of shares excluding treasury stock (5,062 thousand shares).

The Dai-ichi Mutual Life Insurance Company carried out reorganization on April 1, 2010 and therefore its company name was changed to The Dai-ichi Life Insurance Company, Limited.

Monthly Stock Price Range (Tokyo Stock Exchange)



Further Information

Please direct comments regarding the content of this report or requests for other publications to:

Tokyo Gas Co., Ltd., Investor Relations Section,
Investor Relations Dept.
Tel: +81-3-5400-3888
Fax: +81-3-3437-2668
E-mail: tgir@tokyo-gas.co.jp

Forward-Looking Statements

Statements made in this annual report with respect to Tokyo Gas plans, strategies, and beliefs, and other statements that are not expressions of fact are forward-looking statements about the future performance of the Company. As such, they are based on management's assumptions and opinions stemming from currently available information, and therefore involve risks and uncertainties. These risks and uncertainties include, without limitation, general economic conditions in Japan, the exchange rate between the yen and the U.S. dollar, and the ability of Tokyo Gas to continue to adapt to rapid technological developments and deregulation.

Financial Data and Graphs

For purposes of presentation, in this annual report, all amounts less than one billion yen or one million yen have been rounded down, and hundredths of a percentage point have been rounded to the nearest whole number.

In addition, all graphs and tables represent fiscal years ended March 31 of the respective years.