

Investor Information

Tokyo Gas Co., Ltd.

Head Office

1-5-20, Kaigan, Minato-ku, Tokyo 105-8527, Japan
 Tel: +81-3-5400-7561 Fax: +81-3-5472-5385
 URL: http://tokyo-gas.co.jp/index_e.html

Overseas Offices

New York Office
 The Chrysler Building, 405 Lexington Avenue, 33rd Floor
 New York, NY 10174, U.S.A.
 Tel: +1-646-865-0577 Fax: +1-646-865-0592

Paris Office

102, Avenue des Champs-Élysées, 75008 Paris, France
 Tel: +33-1-45-62-00-59 Fax: +33-1-42-25-96-85

Asia Pacific Regional Office

Level 30, Menara Shahzan Insas
 No. 30 Jalan Sultan Ismail, 50250 Kuala Lumpur, Malaysia
 Tel: +60-3-2144-2928 Fax: +60-3-2144-2930

Date of Establishment

October 1, 1885

Paid-in Capital

¥141,844,398,888

Authorized Number of Shares

6,500,000,000 shares

Issued Number of Shares

2,810,171,295 shares

(As of March 31, 2003)

Securities Traded

Common stock: Tokyo, Osaka and Nagoya stock exchanges
 (Trade Code: 9531)

Independent Auditors

Asahi & Co.

Transfer Agent

Japan Securities Agents, Ltd.
 1-2-4, Nihonbashi, Kayabacho, Chuo-ku, Tokyo 103-8202, Japan

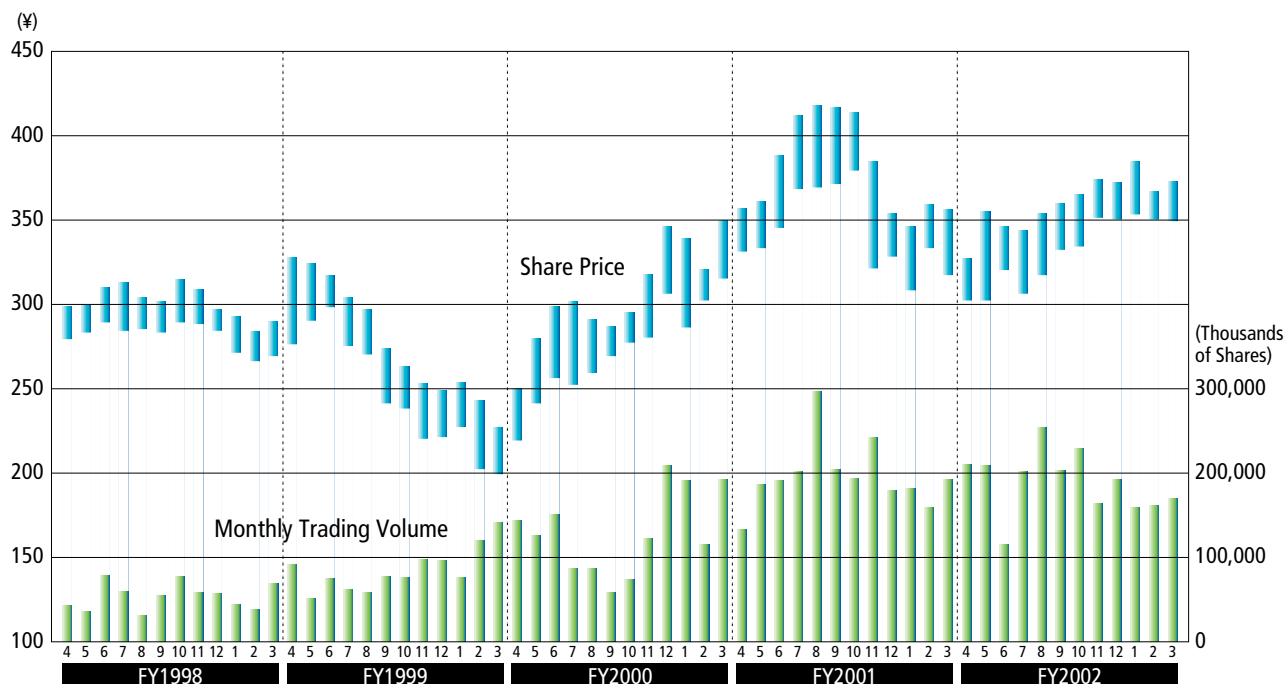
Number of Employees

11,338

Principal Shareholders

| Name | Number of Shares Held (Thousands) | Percentage of Total Shares Outstanding |
|--|-----------------------------------|--|
| Japan Trustee Services Bank, Ltd. (Trust Account) | 159,278 | 5.67 |
| The Master Trust Bank of Japan, Ltd. (Trust Account) | 159,246 | 5.67 |
| Nippon Life Insurance Company | 151,518 | 5.39 |
| The Dai-ichi Mutual Life Insurance Company | 135,964 | 4.84 |
| Fukoku Mutual Life Insurance Company | 78,504 | 2.79 |
| State Street Bank and Trust Company | 46,316 | 1.65 |
| Employees Shareholding Association | 43,073 | 1.53 |
| Mizuho Corporate Bank, Ltd. | 43,000 | 1.53 |
| Mitsubishi Corporation | 42,959 | 1.53 |
| Boston Safe Deposit BSDT Treaty Clients Omnibus | 40,925 | 1.46 |

Monthly Share Price Range (Tokyo Stock Exchange)



Note: Fiscal years begin in April and end in March of the following calendar year.