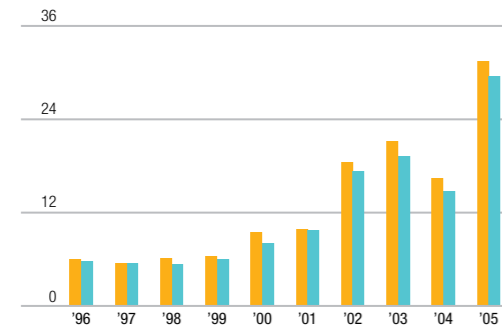


FINANCIAL DATA (PERFORMANCE INDICATORS) 財務データ (投資指標)

Earnings per Share (¥)

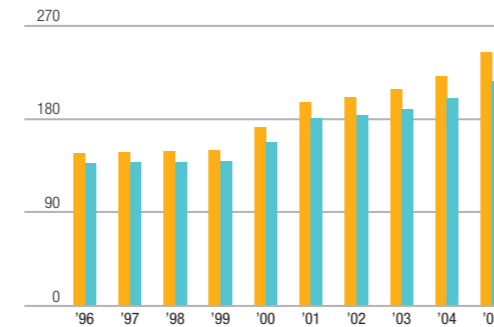
1株当たり当期純利益 (EPS) (円)

Consolidated 連結
Nonconsolidated 単独



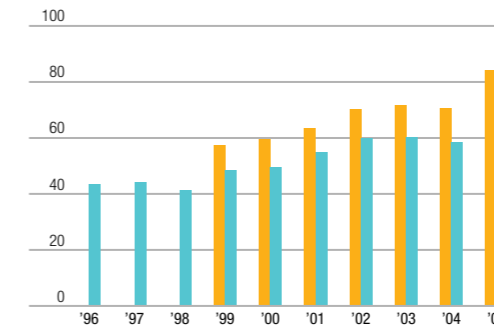
Book Value per Share (¥)

1株当たり株主資本 (BPS) (円)



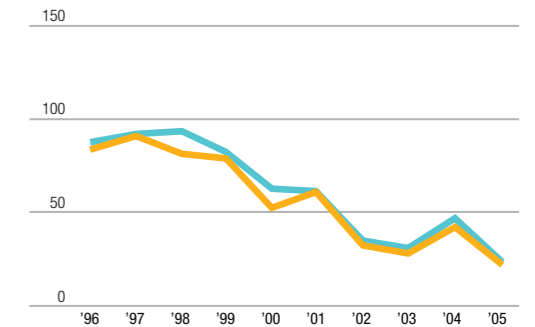
Cash Flow per Share (¥)

1株当たりキャッシュ・フロー (CFPS) (円)



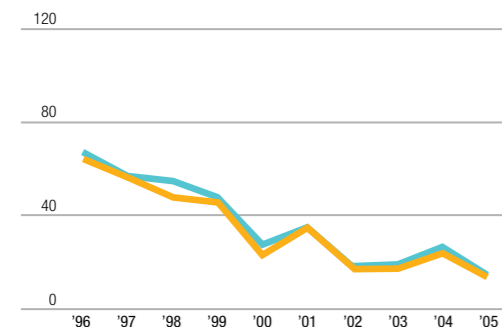
Payout Ratio (%)

配当性向 (%)



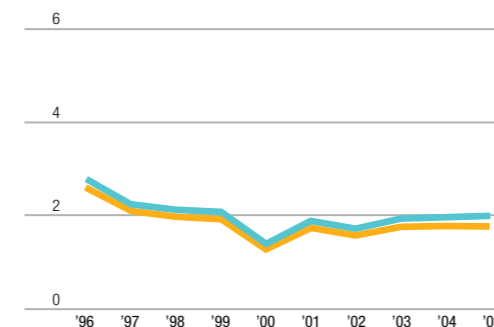
Price Earnings Ratio (Times)

PER (倍)



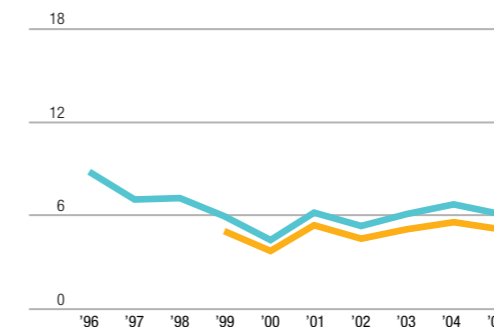
Price Book Value Ratio (Times)

PBR (倍)



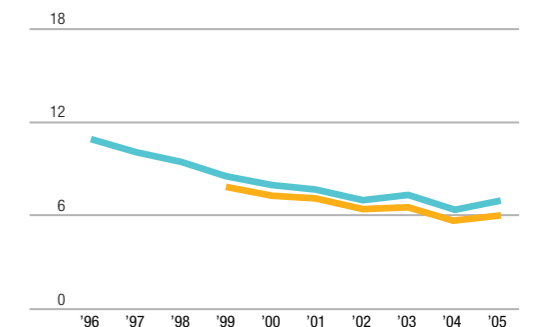
Price Cash Flow Ratio (Times)

PCFR (倍)



EV/EBITDA (Times)

EBITDA 倍率 (倍)



At March 31

各3月31日時点

1996 1997

1998

1999

2000

2001

2002

2003

2004

2005



CONSOLIDATED

連結

Earnings per Share (¥)	1株当たり当期純利益 (EPS) (円)	5.97	5.49	6.14	6.32	9.50	9.82	18.47	21.18	16.44	31.47
Book Value per Share (¥)	1株当たり株主資本 (BPS) (円)	147.23	147.65	148.67	149.98	172.33	196.72	200.75	208.65	221.53	244.73
Cash Flow per Share (¥)	1株当たりキャッシュ・フロー (CFPS) (円)	—	—	—	57.21	59.43	63.33	70.27	71.73	70.44	84.06
Dividends on Equity (%)	株主資本配当率 (%)	3.41	3.39	3.37	3.35	3.10	3.25	3.02	2.92	3.21	2.98
Payout Ratio (%)	配当性向 (%)	83.83	91.04	81.50	79.09	52.63	61.10	32.48	28.16	42.22	22.08
Price Earnings Ratio (times)	PER (倍)	64.38	56.45	47.92	45.72	23.26	34.83	17.21	17.37	23.97	13.73
Price Book Value Ratio (times)	PBR (倍)	2.61	2.10	1.98	1.93	1.28	1.74	1.58	1.76	1.78	1.77
Price Cash Flow Ratio (times)	PCFR (倍)	—	—	—	5.05	3.72	5.40	4.53	5.13	5.59	5.14
EV/EBITDA (times)	EBITDA 倍率 (倍)	—	—	—	7.93	7.26	7.14	6.44	6.56	5.69	6.04

NONCONSOLIDATED

単独

Earnings per Share (¥)	1株当たり当期純利益 (EPS) (円)	5.70	5.43	5.34	6.02	7.97	9.75	17.24	19.19	14.78	29.46
Book Value per Share (¥)	1株当たり株主資本 (BPS) (円)	137.55	137.94	138.26	139.25	157.78	180.85	184.02	189.23	199.97	216.54
Cash Flow per Share (¥)	1株当たりキャッシュ・フロー (CFPS) (円)	43.40	43.94	41.24	48.39	49.52	54.99	59.77	60.28	58.52	70.45
Cash Dividends Paid (¥ million)	年間配当総額 (百万円)	14,050	14,050	14,050	14,050	14,050	16,860	16,859	16,672	18,908	18,557
Dividends on Equity (%)	株主資本配当率 (%)	3.64	3.63	3.62	3.60	3.37	3.54	3.29	3.19	3.54	3.33
Payout Ratio (%)	配当性向 (%)	87.73	92.10	93.56	83.06	62.74	61.53	34.80	31.09	46.95	23.59
Price Earnings Ratio (times)	PER (倍)	67.38	57.10	55.01	48.01	27.73	35.07	18.44	19.18	26.66	14.66
Price Book Value Ratio (times)	PBR (倍)	2.79	2.25	2.13	2.08	1.40	1.89	1.73	1.94	1.97	2.00
Price Cash Flow Ratio (times)	PCFR (倍)	8.85	7.06	7.13	5.97	4.46	6.22	5.32	6.11	6.73	6.13
EV/EBITDA (times)	EBITDA 倍率 (倍)	10.94	10.04	9.45	8.58	7.95	7.70	7.03	7.30	6.41	7.00
Cash Dividend per Share (¥)	1株当たり配当金 (円)	5.00	5.00	5.00	5.00	5.00	6.00	6.00	6.00	7.00	7.00

● Cash Flow per Share = (Net Income + Depreciation and Amortization) / Numbers of Issued Shares (average)

1株当たりキャッシュ・フロー = (当期利益 + 減価償却費 + 長期前払費用) ÷ 発行済株式総数 (期中平均)

● Dividends on Equity = Annual Cash Dividend / Shareholders' Equity (average) × 100 株主資本配当率 = 年間配当金 ÷ 株主資本 (期首期末平均) × 100

● PCFR = Share Price (year-end) / CFPS PCFR = 期末株価 ÷ CFPS

● EV/EBITDA = (Market Capitalization + Interest-bearing Debt + Minority Interest - Cash and Bank Deposits - Marketable Securities)

/ (Operating Income + Depreciation and Amortization)

EBITDA 倍率 = (株式時価総額 + 有利子負債残高 + 少数株主持分 - 現金預金 - 短期保有目的有価証券) ÷ (営業利益 + 長期前払費用 + 減価償却費)