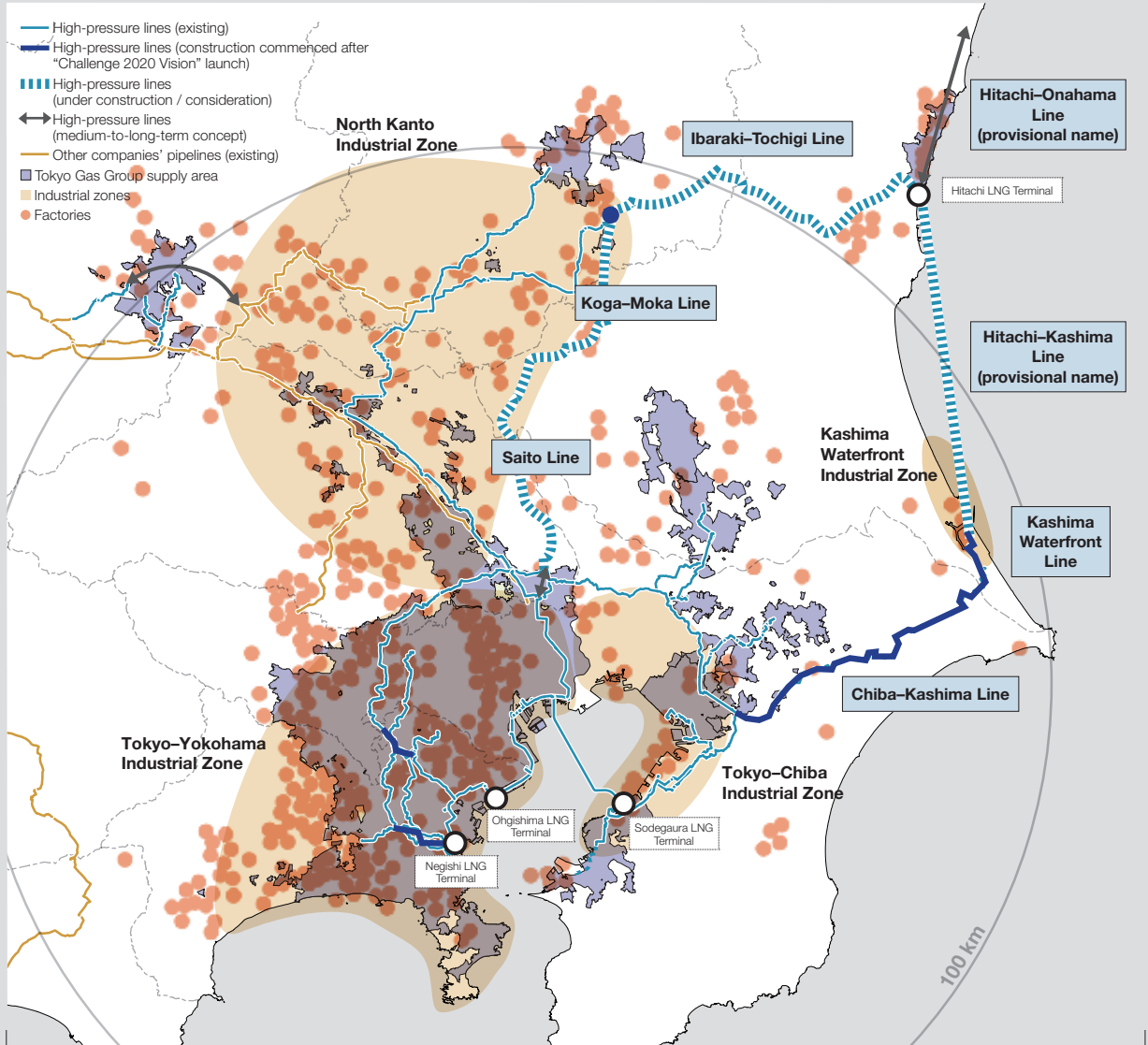


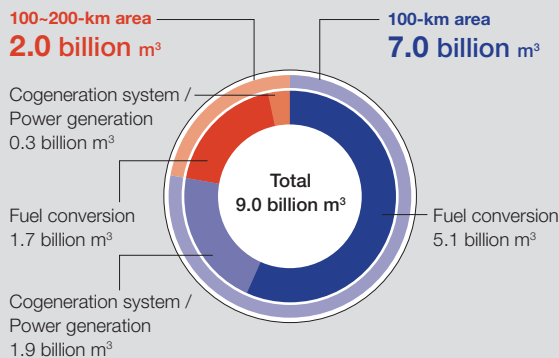
Our Potential

The Kanto region, the Company's service area, is ripe with latent demand for natural gas present in such areas as industrial zones populated by factories using heavy fuel oil. By extending our pipeline network into these areas, we will be well placed to capture this latent demand.

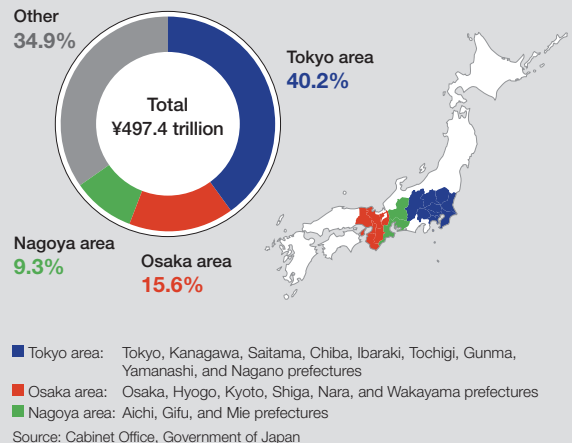
Energy demand concentration in the Kanto Region



Potential for Industrial and Commercial Demand in the Kanto Region (200-kilometer radius around Tokyo)



Breakdown of Japan's GDP by Major Areas

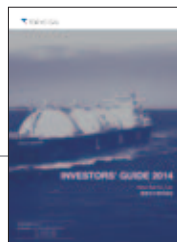


Financial and Industry Data

(EXCEL Spreadsheet Data Available)

Investors' Guide

 http://www.tokyo-gas.co.jp/IR/english/library/invguid_e.html



Quarterly Financial Results

Earnings Announcements

 http://www.tokyo-gas.co.jp/IR/english/event/earn_e.html

Consolidated Financial Results Bulletin

 http://www.tokyo-gas.co.jp/IR/english/library/earn_e.html

Details of Challenge 2020 Vision

The Tokyo Gas Group's Vision for Energy and the Future ~Challenge 2020 Vision~

(Released November 2011)

 http://www.tokyo-gas.co.jp/IR/english/manage/vision_e.html

CSR Activities

Tokyo Gas Group CSR Report

 http://www.tokyo-gas.co.jp/csr/index_e.html



For inquiries regarding planning and editing of this report:

Investor Relations Sect., Finance Dept.,

Tokyo Gas Co., Ltd.

1-5-20 Kaigan, Minato-ku, Tokyo 105-8527, Japan

Tel: +81-3-5400-3888

Fax: +81-3-5472-3849

E-mail: tgir@tokyo-gas.co.jp

Published on July 23, 2014

