

Investor Information

As of March 31, 2005

Tokyo Gas Co., Ltd.

Head office

1-5-20 Kaigan, Minato-ku, Tokyo 105-8527, Japan
URL: <http://www.tokyo-gas.co.jp>

Overseas Offices

New York Office

The Chrysler Building, 405 Lexington Avenue, 33rd Floor
New York, NY 10174, U.S.A.
Tel: +1-646-865-0577 Fax: +1-646-865-0592

Paris Office

102, Avenue des Champs-Élysées, 75008 Paris, France
Tel: +33-1-45-62-00-59 Fax: +33-1-42-25-96-85

Asia Pacific Regional Office

Level 30, Menara Standard Chartered
No. 30 Jalan Sultan Ismail, 50250 Kuala Lumpur, Malaysia
Tel: +60-3-2144-2928 Fax: +60-3-2144-2930

Date of Establishment October 1, 1885

Paid-in Capital ¥141,844,398,888

Total number of shares issuable 6,500,000,000 shares

Issued Number of Shares 2,810,171,295 shares

Number of Shareholders 176,451

Securities Traded Common stock: Tokyo, Osaka and Nagoya stock exchanges (Trade code: 9531)

Independent Auditors KPMG AZSA & Co.

Agent to Manage Shareholders Registry

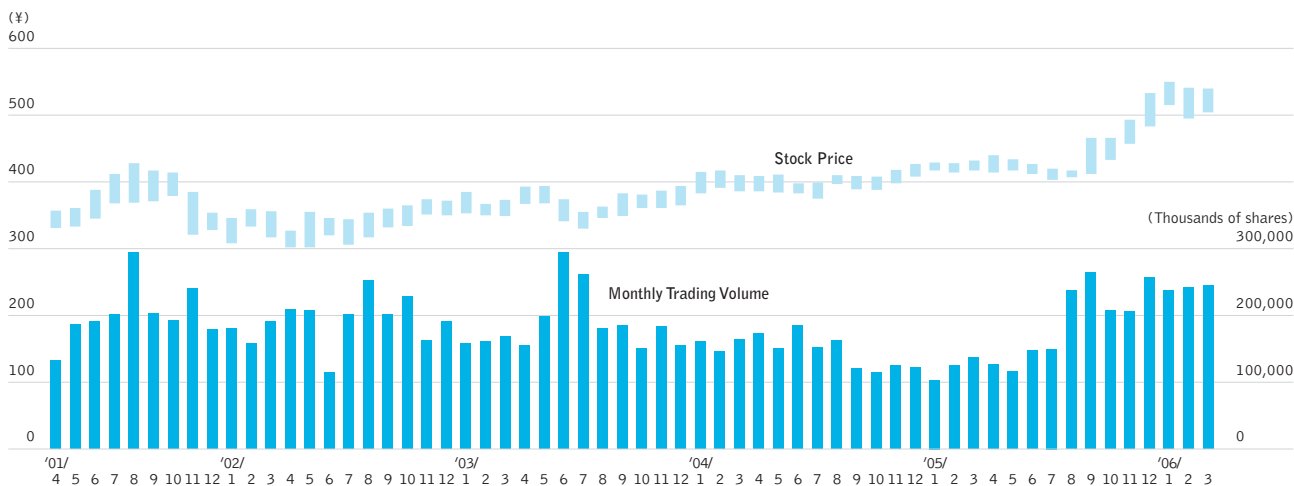
The Chuo Mitsui Trust & Banking Co., Ltd. 3-33-1 Shiba, Minato-ku, Tokyo 105-8574, Japan

Number of Employees 16,675 (Consolidated basis, excluding part-time workers)

Principal Shareholders

Name	Number of shares held (Thousands)	Percentage of total shares outstanding(%)
Nippon Life Insurance Company	163,000	5.80
The Dai-ichi Mutual Life Insurance Company	155,962	5.55
Tokyo Gas Co., Ltd.	117,825	4.19
Japan Trustee Services Bank, Ltd. (Trust Account)	100,216	3.57
The Master Trust Bank of Japan, Ltd. (Trust Account)	93,595	3.33
State Street Bank and Trust Company	76,193	2.71
State Street Bank and Trust Company (505103)	70,525	2.51
Fukoku Mutual Life Insurance Company	67,504	2.40
Morgan Stanley and Co., Ltd.	46,463	1.65
The Chase Manhattan Bank N.A. London	45,069	1.60
Employees Shareholding Association	39,338	1.40

Monthly Stock Price Range (Tokyo Stock Exchange)



FURTHER INFORMATION

Please direct comments regarding the content of this report or requests for other publications to:

Investor Relations Section, Corporate Planning Dept.

Tel: +81-3-5400-3888 Fax: +81-3-3437-2668
E-mail: tgir@tokyo-gas.co.jp

International Business Coordination Section, Business Development Dept.

Tel: +81-3-5400-7561 Fax: +81-3-5472-5385

Forward-Looking Statements

Statements made in this annual report with respect to Tokyo Gas plans, strategies and beliefs, and other statements that are not expressions of fact are forward-looking statements about the future performance of the company. As such, they are based on management's assumptions and opinions stemming from currently available information, and therefore involve risks and uncertainties. These risks and uncertainties include, without limitation, general economic conditions in Japan, the exchange rate between the yen and the U.S. dollar, and Tokyo Gas ability to continue to adapt to rapid technological developments and deregulation.

Financial Data and Graphs

For purposes of presentation in this annual report, all amounts less than one billion yen or one million yen, and hundredths of a percentage point, have been rounded to the nearest whole number. In addition, all graphs represent fiscal years ended March 31 of the respective years.