

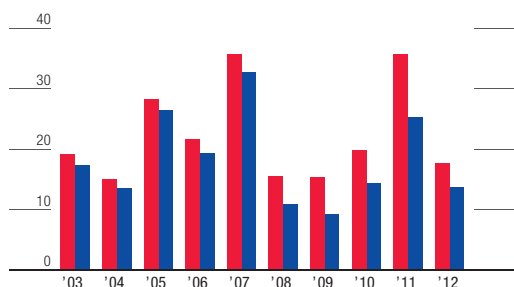
FINANCIAL DATA (PERFORMANCE INDICATORS)

財務データ(投資指標)

■ Consolidated 連結 ■ Non-consolidated 個別

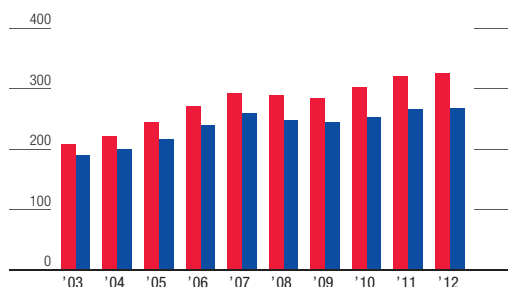
Earnings per Share, adjusted for latent shares (¥)

EPS (潜在株式調整後1株当たり当期純利益) (円)



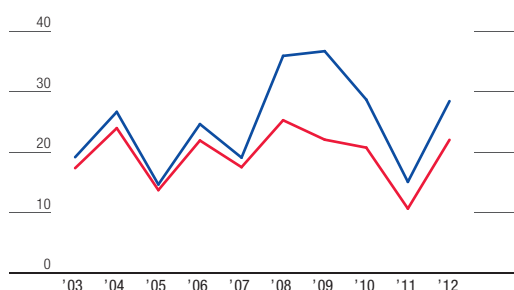
Book Value per Share (¥)

BPS (1株当たり純資産) (円)



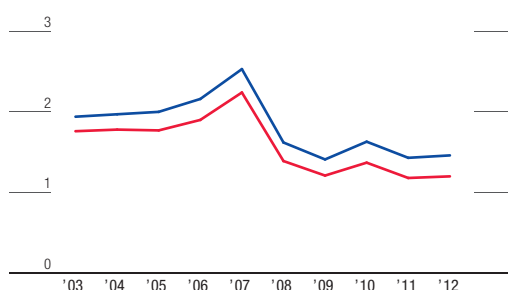
Price Earnings Ratio (times)

PER (倍)



Price Book Value Ratio (times)

PBR (倍)



For the years ended March 31

3月31日時点

2003

CONSOLIDATED

EPS (Earnings per Share, adjusted for latent shares) (¥)	19.11
BPS (Book Value per Share) (¥)	208.65
CFPS (Cash Flow per Share) (¥)	71.73
DOE (Dividends on Equity) (%)	2.92
Total Payout Ratio (%)	75.18
Payout Ratio (%)	28.33
PER (Price Earnings Ratio) (times)	17.37
PBR (Price Book Value Ratio) (times)	1.76
Price Cash Flow Ratio (times)	5.13
EBITDA (¥ million)	264,321
EV/EBITDA (times)	6.56

連結

EPS (潜在株式調整後1株当たり当期純利益) (円)	19.11
BPS (1株当たり純資産) (円)	208.65
CFPS (1株当たりキャッシュ・フロー) (円)	71.73
DOE (自己資本配当率) (%)	2.92
総分配性向 (%)	75.18
配当性向 (%)	28.33
PER (倍)	17.37
PBR (倍)	1.76
PCFR (倍)	5.13
EBITDA (百万円)	264,321
EBITDA 倍率 (倍)	6.56

NON-CONSOLIDATED

EPS (Earnings per Share, adjusted for latent shares) (¥)	17.38
BPS (Book Value per Share) (¥)	189.23
CFPS (Cash Flow per Share) (¥)	60.28
Issued Number of Shares (Common Stock) (thousands of shares)	2,810,171
Cash Dividends Paid (¥ million)	16,672
DOE (Dividends on Equity) (%)	3.19
Payout Ratio (%)	31.27
PER (Price Earnings Ratio) (times)	19.18
PBR (Price Book Value Ratio) (times)	1.94
Price Cash Flow Ratio (times)	6.11
EBITDA (¥ million)	214,745
EV/EBITDA (times)	7.30
Dividend per Share (¥)	6.00
Stock Repurchase	10,000

個別

EPS (潜在株式調整後1株当たり当期純利益) (円)	17.38
BPS (1株当たり純資産) (円)	189.23
CFPS (1株当たりキャッシュ・フロー) (円)	60.28
発行済株式総数 (普通株式) (千株)	2,810,171
年間配当総額 (百万円)	16,672
DOE (自己資本配当率) (%)	3.19
配当性向 (%)	31.27
PER (倍)	19.18
PBR (倍)	1.94
PCFR (倍)	6.11
EBITDA (百万円)	214,745
EBITDA 倍率 (倍)	7.30
1株当たり配当金 (円)	6.00
自社株取得額 (百万円)	10,000

Cash Flow per Share = (Net Income + Depreciation + Amortization of Long-term Prepaid Expenses) / Numbers of Issued Shares (average)
 Dividends on Equity = Annual Cash Dividend / Equity (average) × 100
 Total Payout Ratio of Year n = [(Dividends from Unappropriated Profit in Year n) + (Amount of Treasury Stocks Acquired in Year n + 1)] / (Consolidated Net Income in Year n)
 Payout Ratio = Dividends Paid per Share / Net Income per Share × 100

1株当たりキャッシュ・フロー = (当期純利益 + 減価償却費 + 長期前払費用償却) ÷ 期中平均株式総数
 DOE (自己資本配当率) = 年間配当金 ÷ 自己資本 (期中平均) × 100
 n年度総分配性向 = ((n年度年間配当金総額) + (n+1年度自社株取得額)) ÷ (n年度連結当期純利益)
 配当性向 = 1株当たり配当金支払額 ÷ 1株当たり当期純利益 × 100

As of March 31

3月31日時点

2003

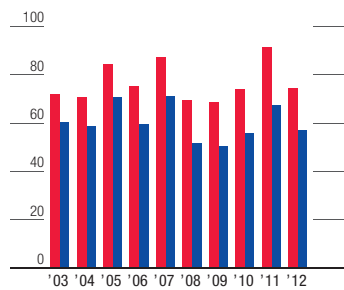
REFERENCE

Tokyo Gas Stock Price (¥)	368
Nikkei Average (¥)	7,973

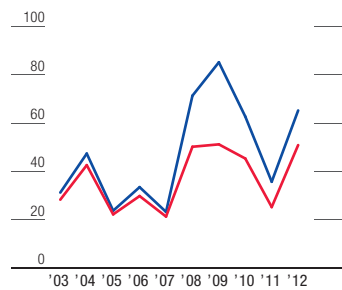
ご参考

期末株価 (円)	368
日経平均株価 (円)	7,973

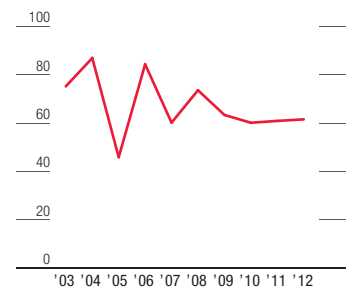
Cash Flow per Share (¥)
CFPS (1株当たりキャッシュ・フロー) (円)



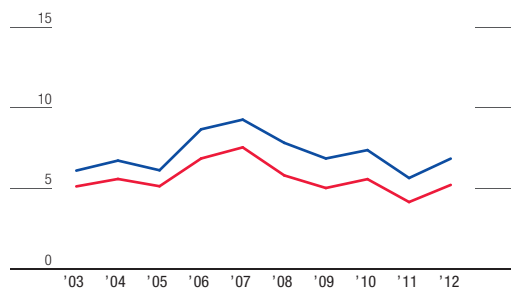
Payout Ratio (%)
配当性向 (%)



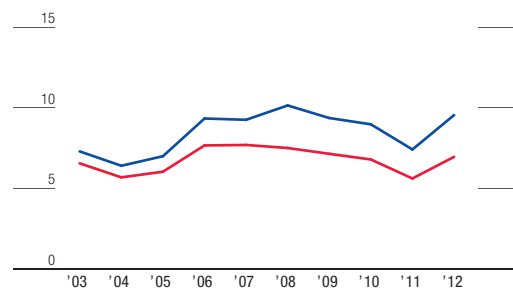
Total Payout Ratio (%)
総分配性向 (%)



Price Cash Flow Ratio (times)
PCFR (倍)



EV/EBITDA (times)
EBITDA 倍率 (倍)



2004	2005	2006	2007	2008	2009	2010	2011	2012
14.98	28.24	21.70	35.69	15.50	15.37	19.86	35.63	17.70
221.53	244.73	270.46	293.11	289.49	284.72	301.58	320.70	324.67
70.44	84.06	75.12	87.08	69.36	68.52	73.82	91.37	74.45
3.21	2.98	2.71	2.83	2.72	2.78	3.07	2.88	2.74
86.87	45.87	84.29	60.14	73.56	63.35	60.11	60.87	61.36
42.58	22.24	29.81	21.33	50.19	51.18	45.32	25.26	50.85
23.97	13.73	21.93	17.52	25.28	22.07	20.75	10.67	22.03
1.78	1.77	1.90	2.24	1.39	1.21	1.37	1.18	1.20
5.59	5.14	6.86	7.55	5.81	5.03	5.58	4.16	5.22
299,181	285,619	248,721	295,457	212,469	206,287	231,346	271,788	225,580
5.69	6.04	7.67	7.70	7.51	7.15	6.80	5.62	6.96
13.52	26.47	19.34	32.74	10.94	9.26	14.36	25.19	13.72
199.97	216.54	238.78	259.22	248.43	244.28	253.45	266.58	267.24
58.52	70.45	59.38	70.88	51.45	50.27	55.82	67.30	56.97
2,810,171	2,810,171	2,810,171	2,810,171	2,741,571	2,717,571	2,703,761	2,684,193	2,590,715
18,908	18,557	18,641	21,556	21,251	21,425	24,343	24,108	23,262
3.54	3.33	3.06	3.20	3.12	3.24	3.62	3.45	3.31
47.36	23.76	33.49	23.26	71.30	85.11	62.67	35.73	65.16
26.66	14.66	24.64	19.10	35.92	36.70	28.69	15.09	28.43
1.97	2.00	2.16	2.53	1.62	1.41	1.63	1.43	1.46
6.73	6.13	8.67	9.27	7.83	6.86	7.38	5.65	6.85
246,728	229,494	192,580	234,782	150,103	151,573	171,394	201,672	164,000
6.41	7.00	9.34	9.26	10.15	9.37	8.98	7.42	9.55
7.00	7.00	7.00	8.00	8.00	8.00	9.00	9.00	9.00
27,837	20,000	20,000	33,717	39,000	10,000	5,000	7,938	34,000

PCFR = Share Price (year-end) / CFPS
 EV/EBITDA = (Market Capitalization + Interest-bearing Debt + Minority Interests - Cash and Deposits - Marketable Securities) / (Operating Income + Amortization of Long-term Prepaid Expenses + Depreciation)
 The amount shown for stock repurchase excludes requests for the purchase of odd-lot shares.

PCFR = 期末株価 ÷ CFPS
 EV/EBITDA 倍率 = (株式時価総額 + 有利子負債残高 + 少数株主持分 - 現金預金 - 短期保有目的の有価証券) ÷ (営業利益 + 長期前払費用償却 + 減価償却費)
 自社株取得額は端株買取請求を除いた金額

2004	2005	2006	2007	2008	2009	2010	2011	2012
394	432	515	657	403	345	412	380	390
11,715	11,669	17,060	17,288	12,526	8,110	11,090	9,755	10,084