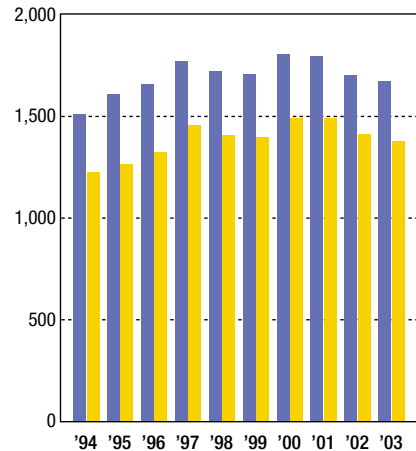


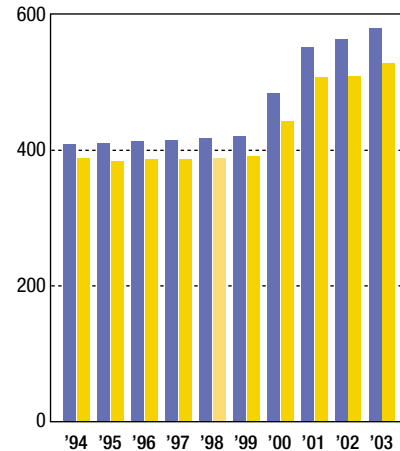
### Total Assets 総資産

(¥ billions/十億円)



### Total Stockholders' Equity 株主資本

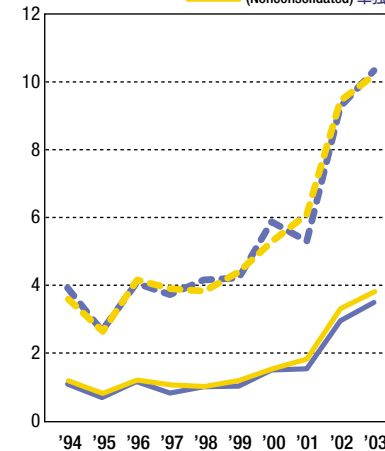
(¥ billions/十億円)



### ROE & ROA

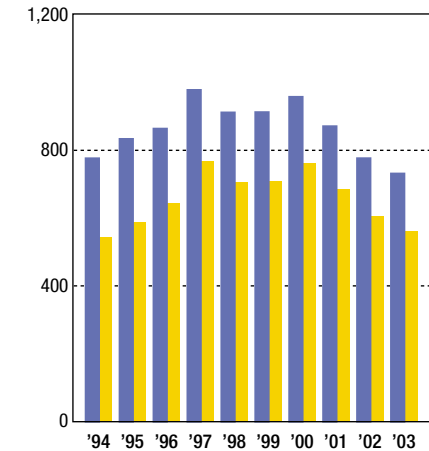
(%)

ROE (Consolidated) 連結 (Nonconsolidated) 単独  
ROA (Consolidated) 連結 (Nonconsolidated) 単独



### Interest-Bearing Debt 有利子負債残高

(¥ billions/十億円)



At March 31 各3月31日時点

(¥ millions/百万円)

#### ■ CONSOLIDATED 連結

	1994	1995	1996	1997	1998	1999	2000	2001	2002	2003
Total Assets 総資産	1,513,037	1,608,243	1,657,176	1,772,131	1,720,683	1,707,446	1,805,086	1,797,669	1,702,712	<b>1,676,064</b>
Return on Assets (%) 総資本利益率 (ROA%)	1.10	0.71	1.03	0.90	0.99	1.04	1.52	1.53	2.97	<b>3.50</b>
Total Stockholders' Equity 株主資本	409,712	411,163	413,725	414,906	417,755	421,443	484,239	552,790	564,077	<b>579,706</b>
Return on Equity (%) 株主資本利益率 (ROE%)	3.97	2.70	4.06	3.72	4.14	4.23	5.90	5.32	9.30	<b>10.35</b>
Interest-Bearing Debt 有利子負債残高	775,695	832,881	863,241	977,467	911,000	911,901	957,085	870,347	775,894	<b>731,301</b>
Fund-Raising Expenses 金融費用	19,373	27,101	28,595	31,207	26,214	22,393	23,366	22,866	19,274	<b>17,472</b>

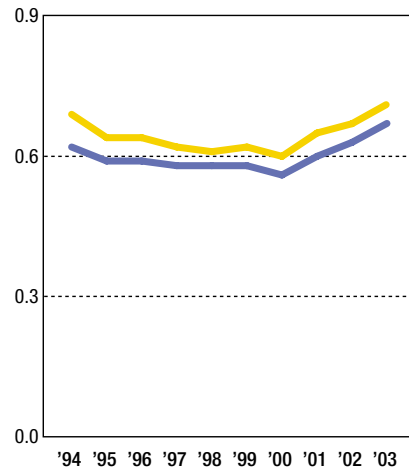
#### ■ NONCONSOLIDATED 単独

	1994	1995	1996	1997	1998	1999	2000	2001	2002	2003
Total Assets 総資産	1,223,890	1,266,207	1,322,537	1,457,733	1,407,889	1,399,820	1,493,699	1,490,157	1,411,444	<b>1,381,359</b>
Return on Assets (%) 総資本利益率 (ROA%)	1.20	0.84	1.24	1.10	1.05	1.20	1.55	1.84	3.34	<b>3.84</b>
Total Stockholders' Equity 株主資本	388,287	384,618	386,501	387,623	388,512	391,295	443,363	508,185	517,070	<b>528,264</b>
Return on Equity (%) 株主資本利益率 (ROE%)	3.67	2.71	4.15	3.94	3.87	4.34	5.37	5.76	9.45	<b>10.26</b>
Interest-Bearing Debt 有利子負債残高	542,626	586,840	643,129	766,493	707,692	708,245	761,946	685,525	605,616	<b>560,047</b>
Fund-Raising Expenses 金融費用	17,761	18,721	21,053	24,282	21,790	18,613	18,552	17,813	15,130	<b>12,784</b>

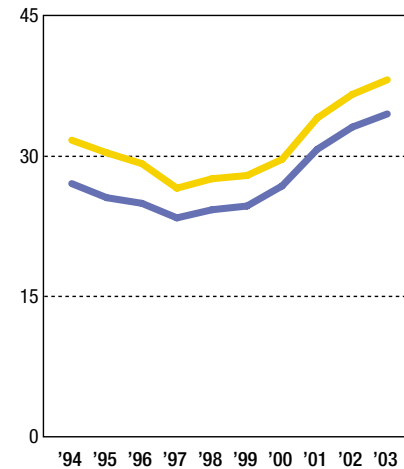
● Fund-Raising Expenses = Interest Expenses + Bond Interest Expenses + Bond Issue Cost Amortization 金融費用 = 支払利息 + 社債利息 + 社債発行費償却

**Total Assets Turnover 総資本回転率**

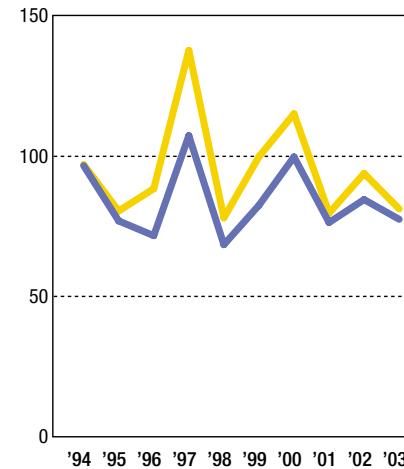
(Times/回)

**Equity Ratio 株主資本比率**

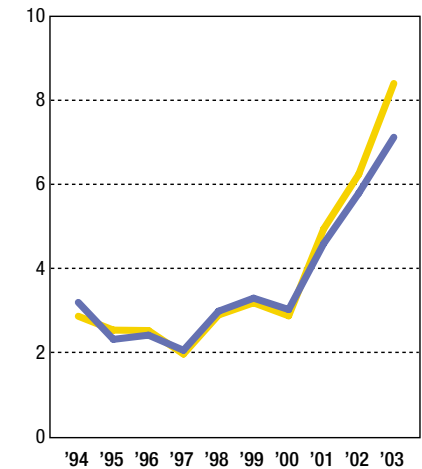
(%)

**Current Ratio 流動比率**

(%)

**Interest Coverage Ratio インタレスト・カバレッジ・レシオ**

(Times/倍)



Download



At March 31 各3月31日時点

**■ CONSOLIDATED 連結**

	1994	1995	1996	1997	1998	1999	2000	2001	2002	2003
Total Assets Turnover (times) 総資本回転率(回)	0.62	0.59	0.59	0.58	0.58	0.58	0.56	0.60	0.63	<b>0.67</b>
Equity Ratio (%) 株主資本比率(%)	27.08	25.57	24.97	23.41	24.28	24.68	26.83	30.75	33.13	<b>34.59</b>
Current Ratio (%) 流動比率(%)	96.67	76.94	71.69	107.39	68.47	82.53	99.80	76.38	84.57	<b>77.64</b>
Debt-Equity Ratio (times) デット・エクイティ・レシオ(倍)	1.89	2.03	2.09	2.36	2.18	2.16	1.98	1.57	1.38	<b>1.26</b>
Interest Coverage Ratio (times) インタレスト・カバレッジ・レシオ(倍)	3.19	2.31	2.41	2.05	2.98	3.29	3.02	4.59	5.79	<b>7.12</b>
Interest Payment Ratio (%) 負債利率(%)	2.47	3.34	3.28	3.11	2.78	2.46	2.50	2.50	2.34	<b>2.32</b>

**■ NONCONSOLIDATED 単独**

	1994	1995	1996	1997	1998	1999	2000	2001	2002	2003
Total Assets Turnover (times) 総資本回転率(回)	0.69	0.64	0.64	0.62	0.61	0.62	0.60	0.65	0.67	<b>0.71</b>
Equity Ratio (%) 株主資本比率(%)	31.73	30.38	29.22	26.59	27.60	27.95	29.68	34.10	36.63	<b>38.24</b>
Current Ratio (%) 流動比率(%)	97.09	80.49	88.47	137.83	78.03	99.88	115.19	79.72	93.91	<b>81.00</b>
Debt-Equity Ratio (times) デット・エクイティ・レシオ(倍)	1.40	1.53	1.66	1.98	1.82	1.81	1.72	1.35	1.17	<b>1.06</b>
Interest Coverage Ratio (times) インタレスト・カバレッジ・レシオ(倍)	2.86	2.53	2.52	1.96	2.89	3.18	2.87	4.94	6.24	<b>8.01</b>
Interest Payment Ratio (%) 負債利率(%)	3.24	3.28	3.30	3.07	2.95	2.60	2.49	2.45	2.34	<b>2.18</b>

● Total Assets Turnover = Net Sales / Average Total Assets 総資本回転率=売上高÷総資本(期中平均)

● Equity Ratio = Stockholders' Equity (year-end) / Total Assets (year-end) x 100 株主資本比率=株主資本(期末)÷総資本(期末)×100

● Current Ratio = Current Assets (year-end) / Current Liabilities (year-end) x 100 流動比率=流動資産(期末)÷流動負債(期末)×100

● Debt-Equity Ratio = Interest-Bearing Debt (year-end) / Stockholders' Equity (year-end) デット・エクイティ・レシオ=有利子負債(期末)÷株主資本(期末)

● Interest Coverage Ratio = (Operating Income + Interest Income + Dividend Income) / Finance Expenses インタレスト・カバレッジ・レシオ=(営業利益+受取利息+受取配当金)÷金融費用

● Interest Payment Ratio = (Interest Expenses + Bond Interest Expenses) / Interest-Bearing Debt (average) x 100 負債利率=(支払利息+社債利息)÷有利子負債(期中平均)×100